

SAFETY FIRST

Your safety and the safety of others is very important. Please familiarize yourself with all instructions and safety warnings before operating the desk. Please keep this manual for future reference.

The vendor is not liable for damage to people, animals or objects caused by improper or unauthorised use. This also applies for damage caused through disregard or insufficient consideration of the safety criteria contained in this user manual, or through alteration of the product or use of unsuitable spare parts.

To help you make informed decisions about safety, we have provided operating procedures and other information on labels and in this user manual. This information alerts you to potential hazards that could hurt you or others. To avoid these situations further please use your own good judgment. You will find important safety information in a variety of forms. Safety messages are preceded by a safety alert symbol and one of three signal words: **DANGER**, **WARNING** or **CAUTION**. These safety messages are listed in order of severity, identify the general risks and actions to avoid these risks. The signal words used in this manual are listed below:



DANGER

Indicates an imminent hazardous with a high risk of serious injury or death.



WARNING

Indicates a potentially hazardous situation that if not avoided may result in serious injury or death.



CAUTION

Indicates a potential hazardous situation which may result in minor or moderate injury. It may also be used to alert against unsafe practices.



NOTICE

Indicates an alert to call attention to proper instructions or operation procedures to assure correct equipment function and to avoid equipment damage or wear.

Note that the information and specifications included in this manual may have changed since the time of approval for printing. No revision service is applied. Please contact your vendor for any updated manual revisions.

CONTENTS

1.	IMPORTANT SAFETY INSTRUCTIONS.....	7
2.	GENERAL INFORMATION	9
2.1	Designated Use.....	9
2.2	Product Specifications.....	9
2.3	Standards & Certificates.....	9
3.	ASSEMBLY & ADJUSTMENT.....	10
3.1	Assembly Instruction.....	10
4.	MAINTENANCE & REPAIRS.....	26
4.1	Cleaning, Inspection & Storage.....	26
4.2	User Maintenance.....	26
4.3	Repairs.....	26
5.	APPENDIX	27
5.1	Dimensions leg system: FX (Fixed).....	27
5.2	Dimensions leg system: IC (Incremental)	28

1. **IMPORTANT SAFETY INSTRUCTIONS**

SAVE THESE INSTRUCTIONS

Your safety and the safety of others is very important. Please read all instructions before using the table.



DANGER

- *Do not use the product if it has been dropped or damaged. Contact the manufacturer for examination or repair.*
- *The desk must not be structurally or technically altered or modified in any way.*



WARNING

- *This appliance can be used by children aged from 8 years and above and persons with reduced physical, sensory or mental capabilities or lack of experience and knowledge if they have been given supervision or instruction concerning use of the appliance in a safe way and understand the hazards involved. Children shall not play with the appliance. Cleaning and user maintenance shall not be made by children unless they are supervised by a person responsible for their safety.*
- *Use this desk only for its intended use as described in these instructions. Do not use attachments not recommended by the manufacturer.*
- *Never drop or insert any object into any opening.*
- *Do not use outdoors.*
- *Do not exceed the maximum intended load.*
- *During the lowering or rising of the desktop, the operator must ensure that no person or object risk being harmed by the operation.*
- *The desk must only be operated while in an upright position.*
- *Children must be supervised at all times.*
- *The desk may not be used to lift people. Do not sit or stand on a desk while it is raised or lowered.*

2. GENERAL INFORMATION

2.1 Designated Use

This stand is intended for a sit and/or stand workstation commercially or in home environments. Any other uses are viewed as improper. The stand shall only be operated indoors in dry, enclosed environments. For maximum intended load and additional specifications see 2.2 Product Specifications.

2.2 Product Specifications

	FX (Fixed)	IC (Incremental)
Maximum load	120 kg	120 kg
Fixed height options	667 mm 1050 mm	560 - 848 mm 572 - 802 mm
Stroke	N/A	288 mm 230 mm

2.3 Standards & Certificates

The complete stand/base is developed to harmonize with standard requirements:

EN 527-2:2016 Office furniture – Work tables – Part 2: Safety, strength and durability requirements

EN 1730 Furniture – Tables – Test methods for the determination of stability, strength and durability.

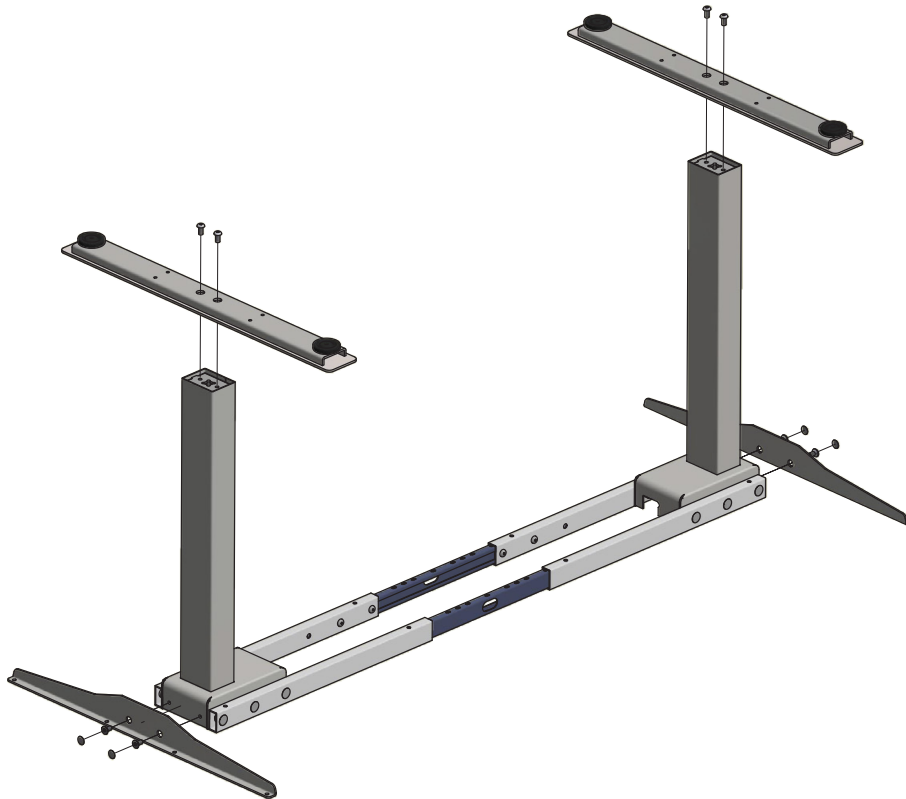
ANSI/BIFMA X5.5-2014 - Desk products - applicable paragraphs

*Load shall be evenly distributed

3. ASSEMBLY & ADJUSTMENT

3.1 Assembly Instruction

The steps which to follow to assemble the desk is illustrated in this section. Make sure to ask your desk vendor for an approved combination of desktop and frame.



NOTICE

Note that this assembly instruction is illustrated using generic parts. Thus, the visual impression of the parts can vary but the basic configuration is the same. Different versions of fixing kits may also be presented. Please follow the instruction corresponding to your order.



NOTICE

Make sure that the desk is leveled, using the adjusters, and placed on flat ground before usage.

Assembly instruction FX & IC

Table of contents

1. Fixed table top – 2 Columns	13
1.1 Height adjustment for incremental	14
2. Sliding table top – 2 Columns	16
2.1 Height adjustment for incremental	18
3. 90° Connection Fixed table top – 3 Columns	20
3.1 Height adjustment for incremental	21
4. Straight Connection Fixed / Sliding table top – 3 Columns	23
4.1 Height adjustment for incremental	25

Fixed table top - 2 columns



5,0×55 ×4 (Crossbar-Tabletop)



4,5×20 ×8 (Sidebar-Tabletop)



M8×25 ×8 (Crossbar-Column)



M8×16 x4 (Sidebar-Column)



M8×16 x4 (Feet-Column)



Plastic plug ×12 (Crossbar)



Cover for screw x4 (Sidebar)

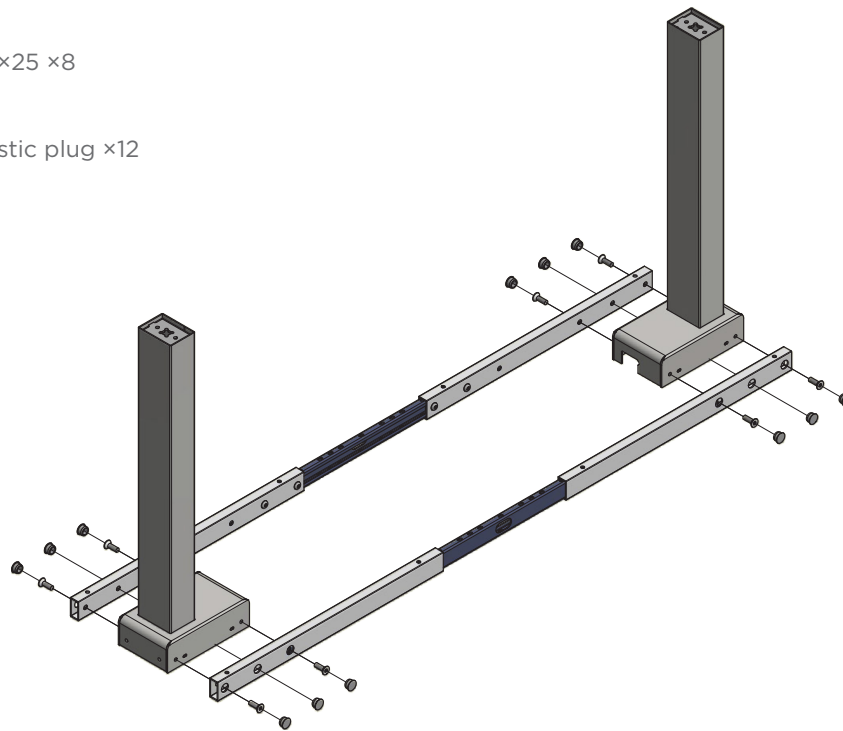
1. Fixed table top - 2 columns



M8x25 x8



Plastic plug x12



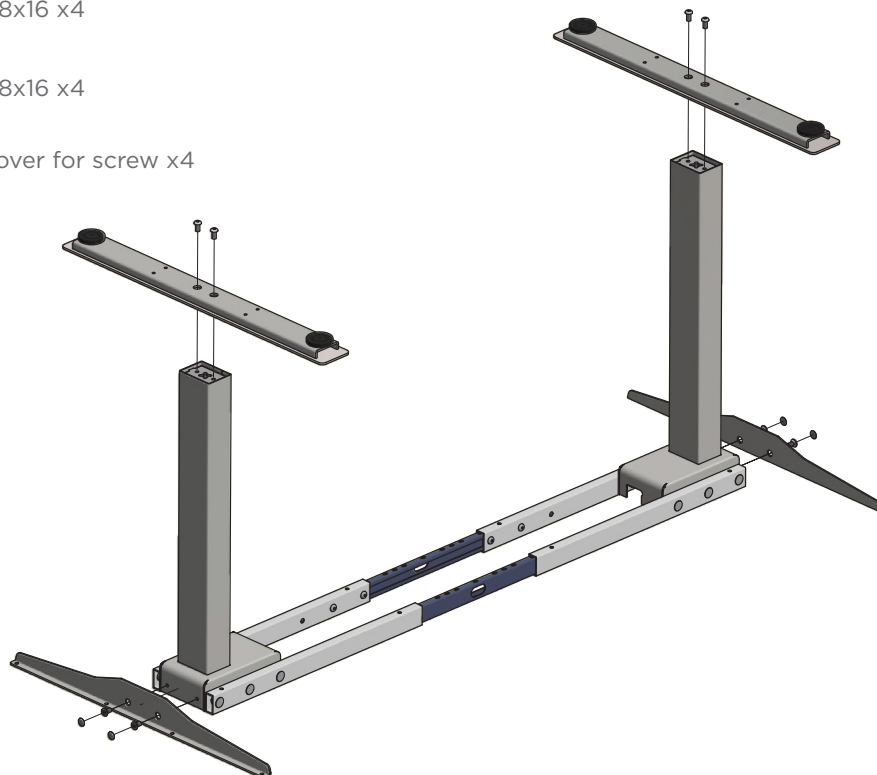
M8x16 x4

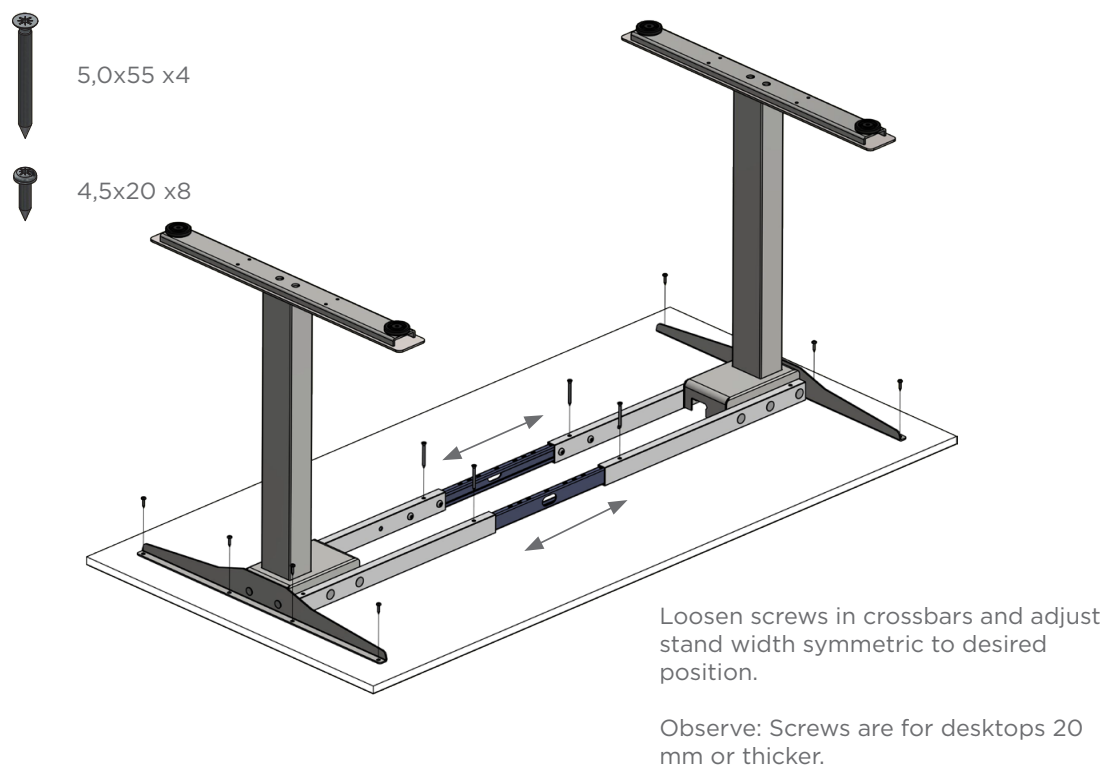


M8x16 x4

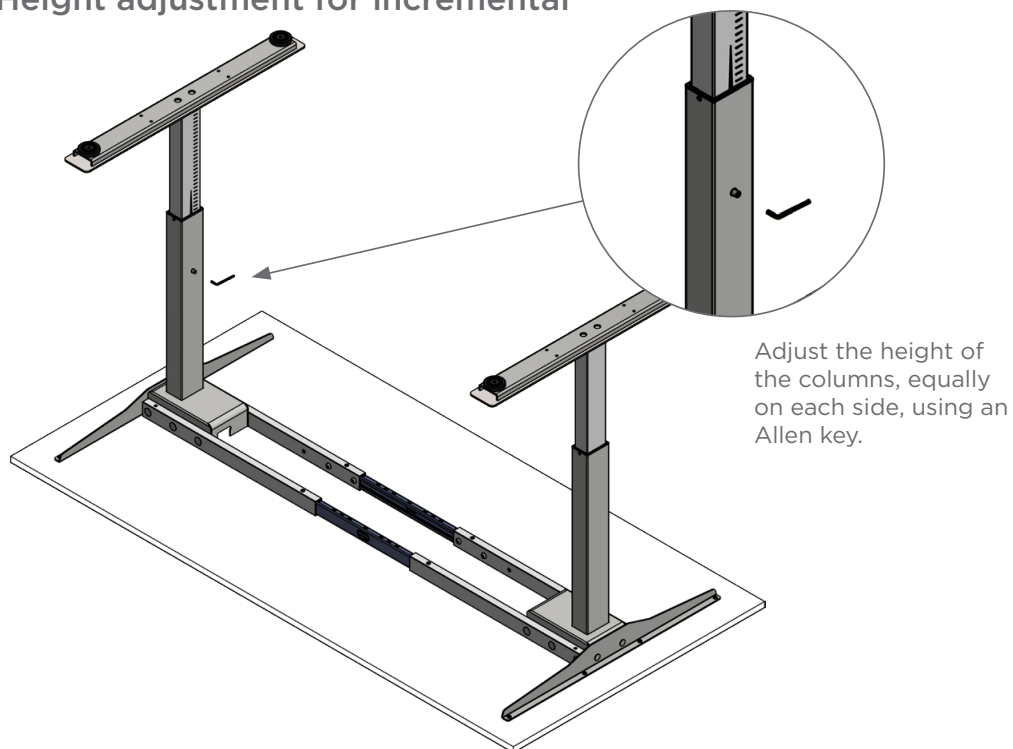


Cover for screw x4





1.1 Height adjustment for incremental



Observe: Make sure every screw is tightened before use.

Ready to use!

Sliding table top - 2 columns



5,0x55 x4 (Crossbar-Tabletop)



4,5x20 x8 (Sidebar-Tabletop)



M8x25 x8 (Crossbar-Column)



M8x16 x4 (Sidebar-Column)



M8x16 x4 (Feet-Column)



Plastic plug x12 (Crossbar)



Cover for screw x4 (Sidebar)



Plastic knob M6 Ø22 x1



Distance x7



Glide x12



M6x16 x3

Use these screws when
assembling the desk with
sliding table top

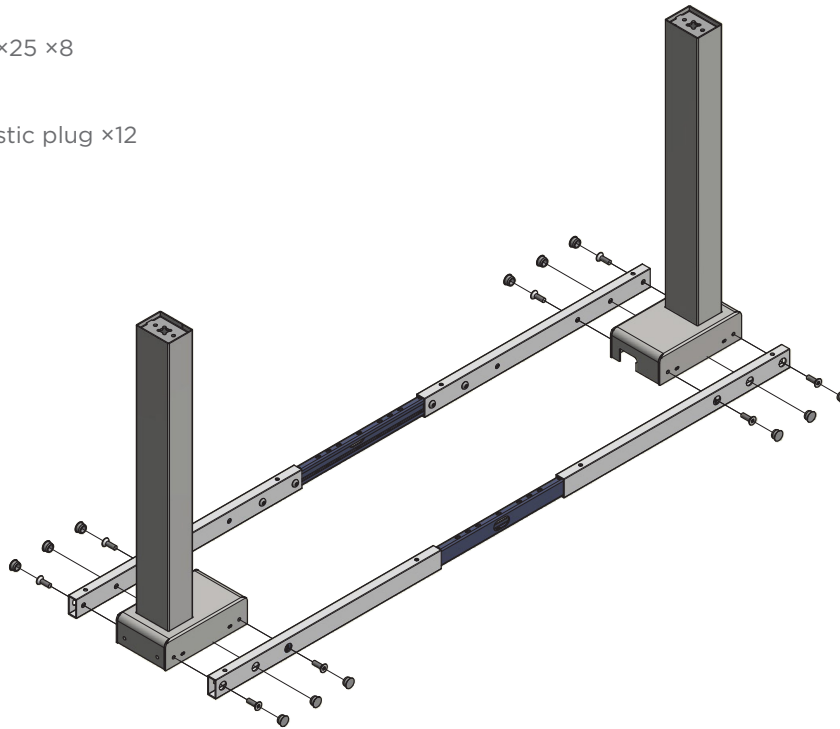
2. Sliding table top - 2 columns



M8x25 x8



Plastic plug x12



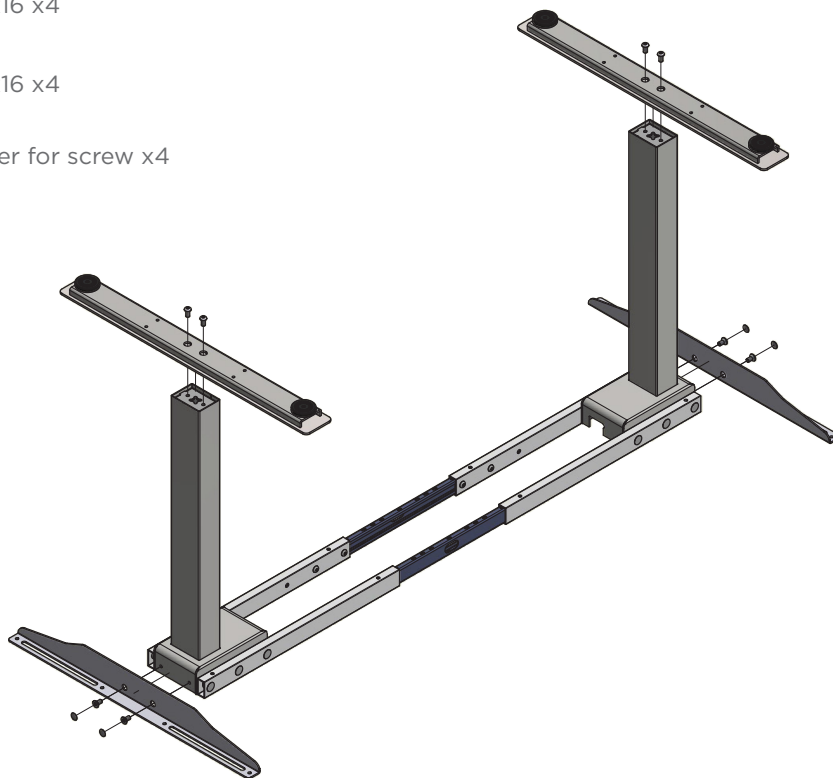
M8x16 x4



M8x16 x4



Cover for screw x4





Plastic knob M6 Ø22 x1



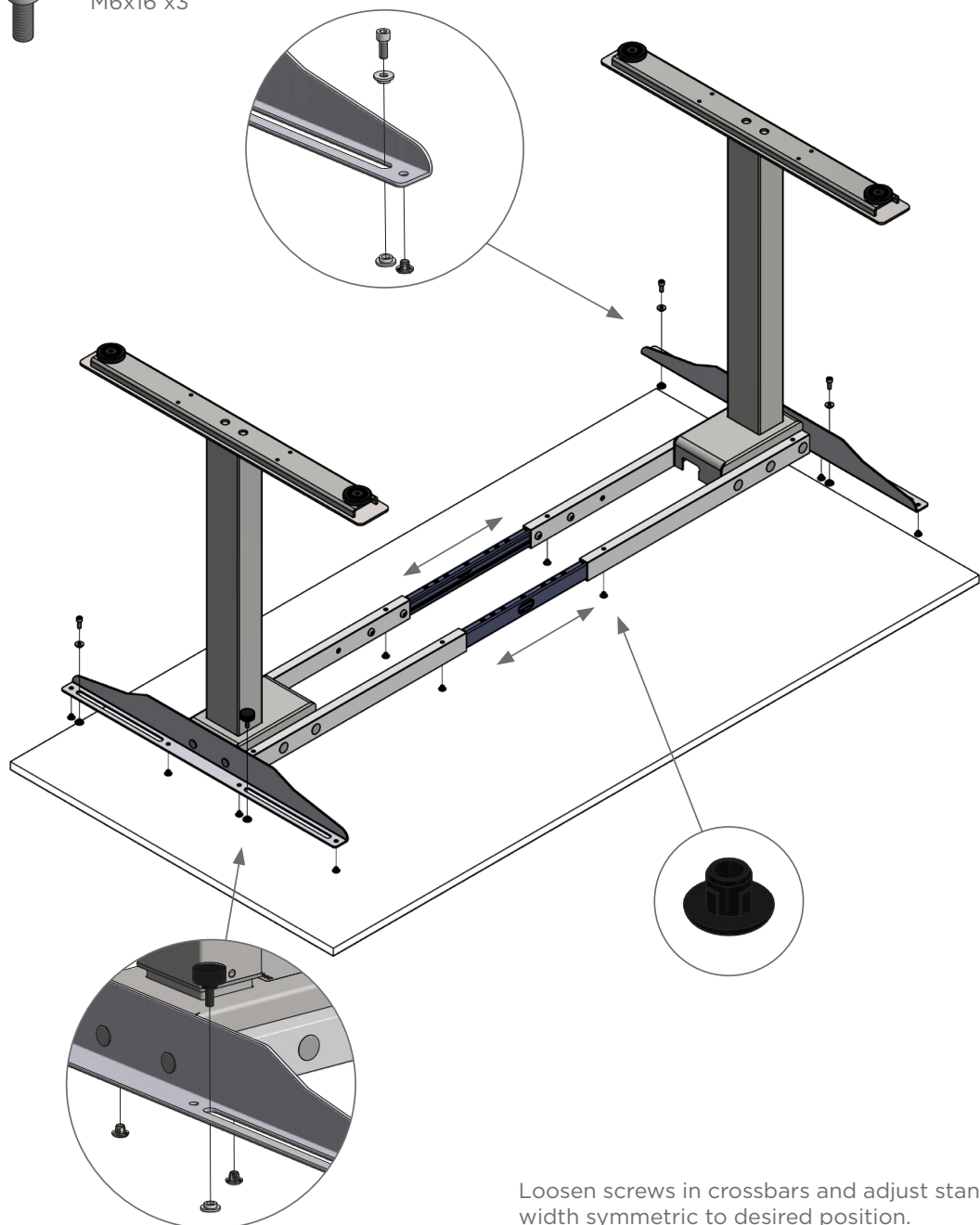
Distance x7



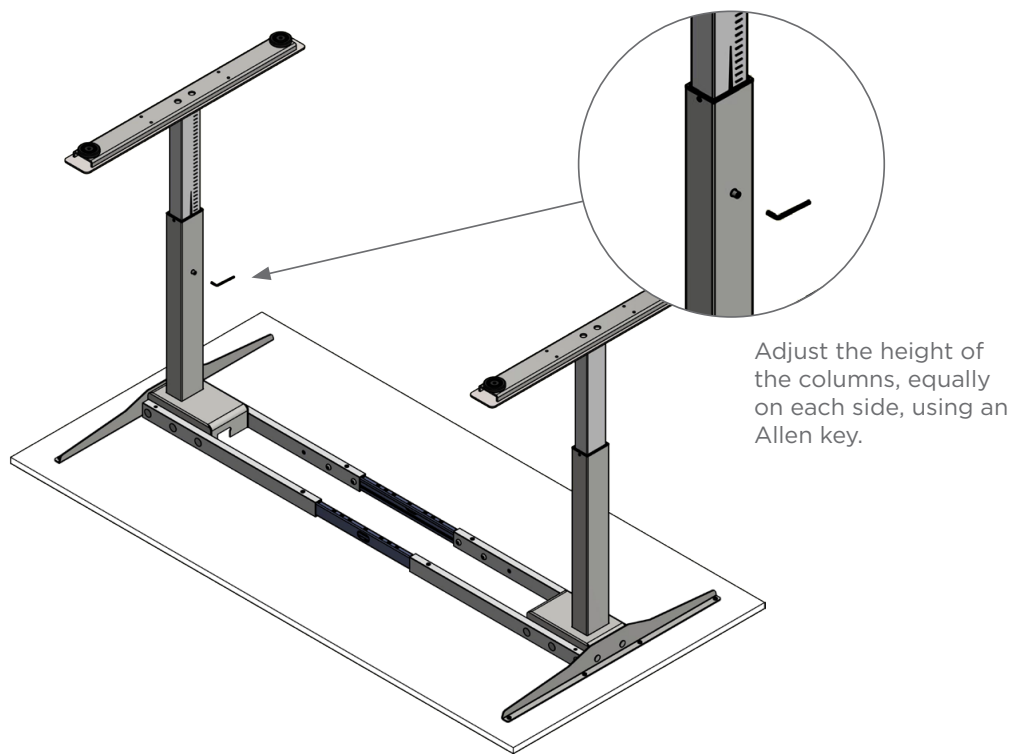
Glide x12



M6x16 x3



2.1 Height adjustment for incremental



Observe: *Make sure every screw is tightened before use.*

Ready to use!

90° Connection Fixed table top - 3 columns



5,0×55 ×10 (Crossbar-Tabletop)



4,5×20 ×8 (Sidebar-Tabletop)



M8×25 ×11 (Crossbar-Column)



M8×16 x6 (Sidebar-Column)



M8×16 x8 (Feet-Column, Crossbar-Connection)



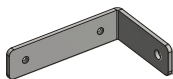
Plastic plug ×21 (Crossbar)



Cover for screw x4 (Sidebar)

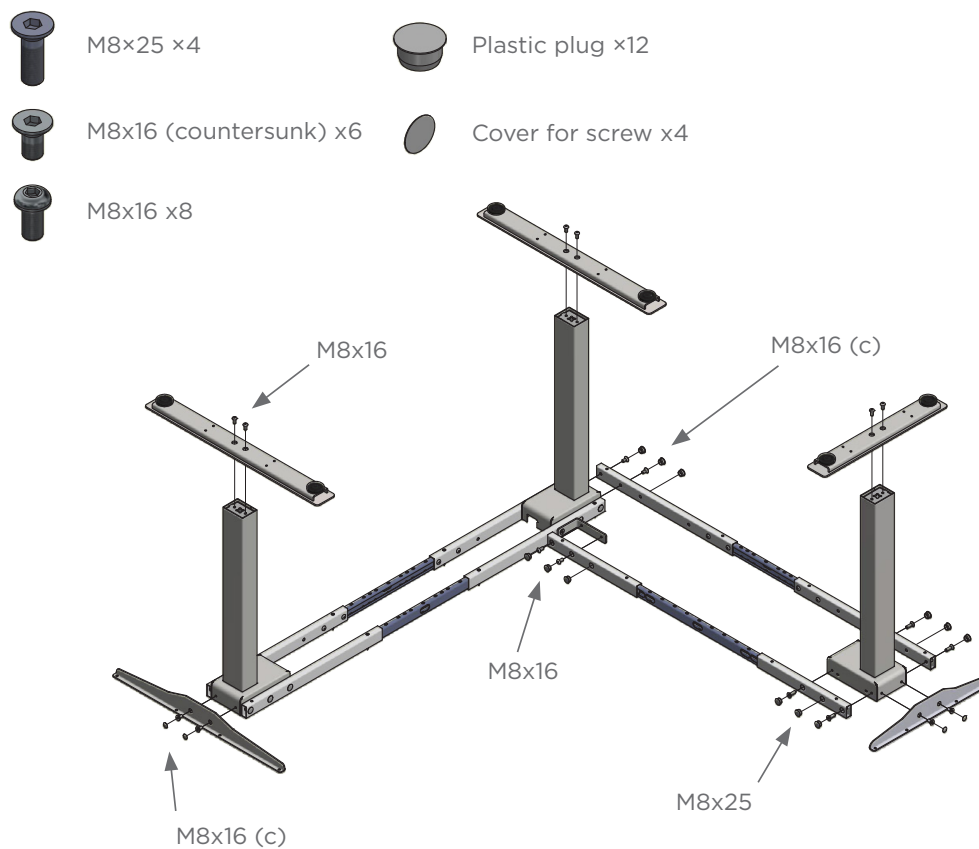
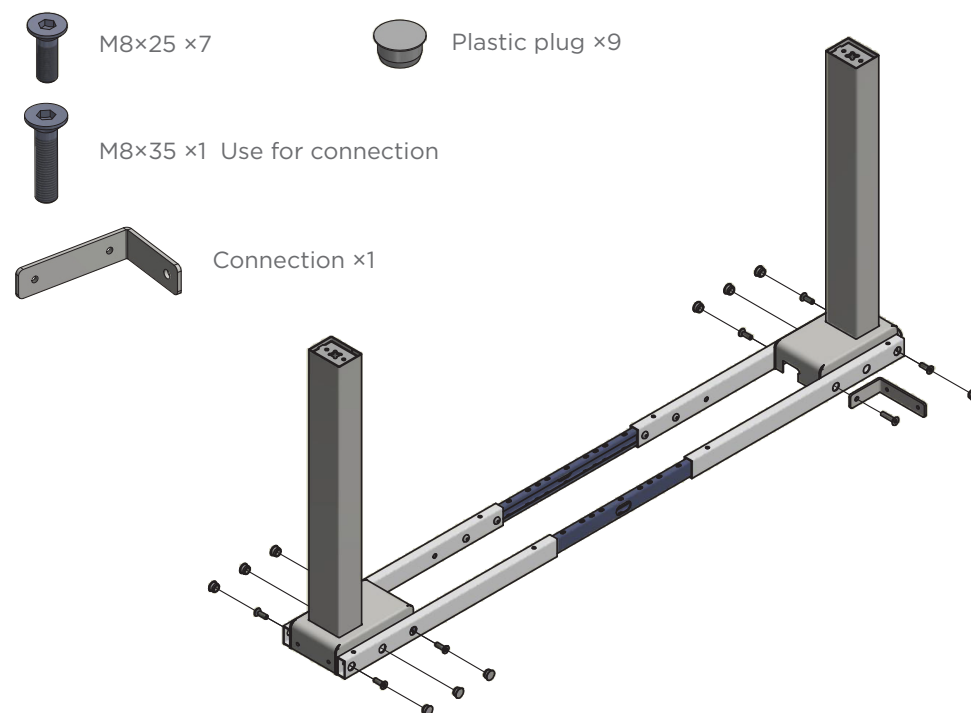


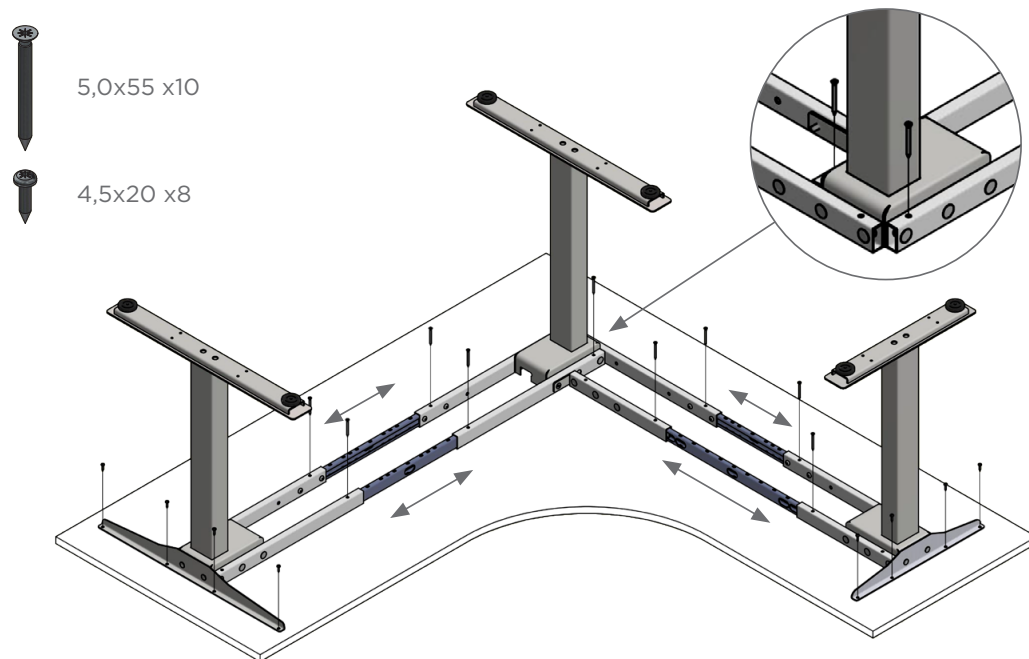
M8×35 ×1 (For attaching 90° connection)



Connection ×1

3. 90° Connection Fixed table top - 3 columns

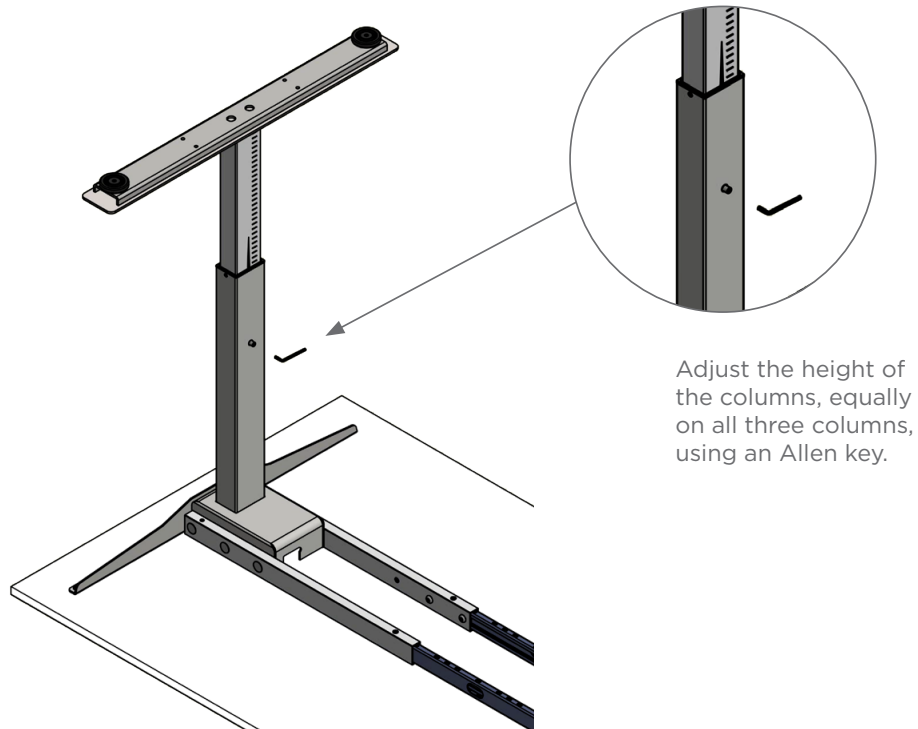




Loosen screws in crossbars and adjust stand width symmetric to desired position.

Observe: Screws are for desktops 20 mm or thicker.

3.1 Height adjustment for incremental



Observe: Make sure every screw is tightened before use.

Ready to use!

Straight Connection Fixed table top - 3 columns



5,0x55 x8 (Crossbar-Tabletop)



4,5x20 x12 (Sidebar-Tabletop)



M8x25 x16 (Crossbar-Column)



M8x16 x6 (Sidebar-Column, Crossbar-Connection)



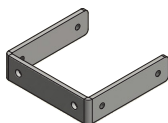
M8x16 x8 (Feet-Column)



Plastic plug x21 (Crossbar)



Cover for screw x4 (Sidebar)



Connection x1

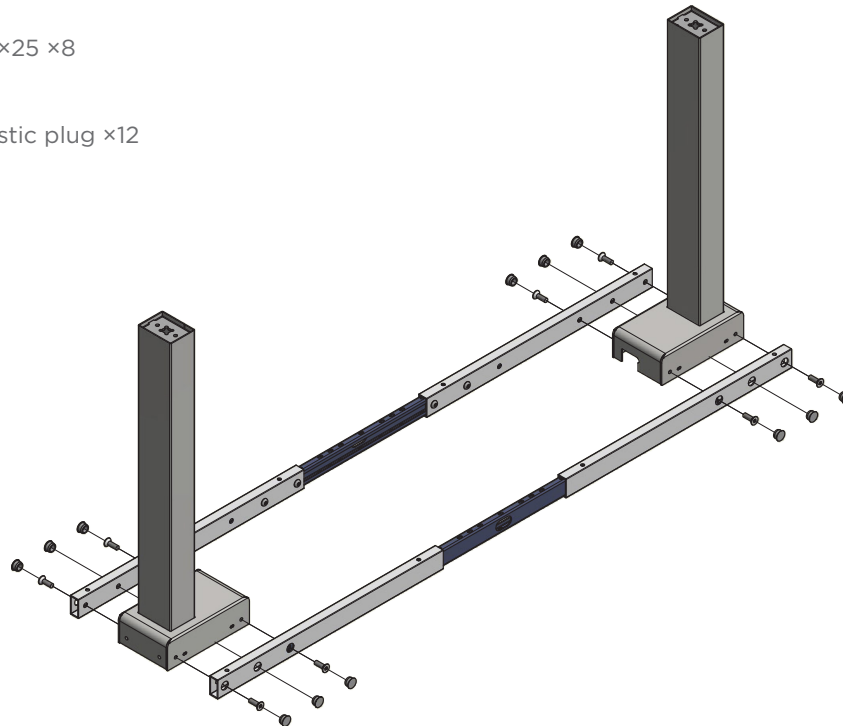
4. Straight Connection Fixed table top - 3 columns



M8x25 x8



Plastic plug x12



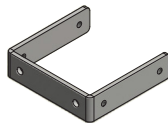
M8x16 x4



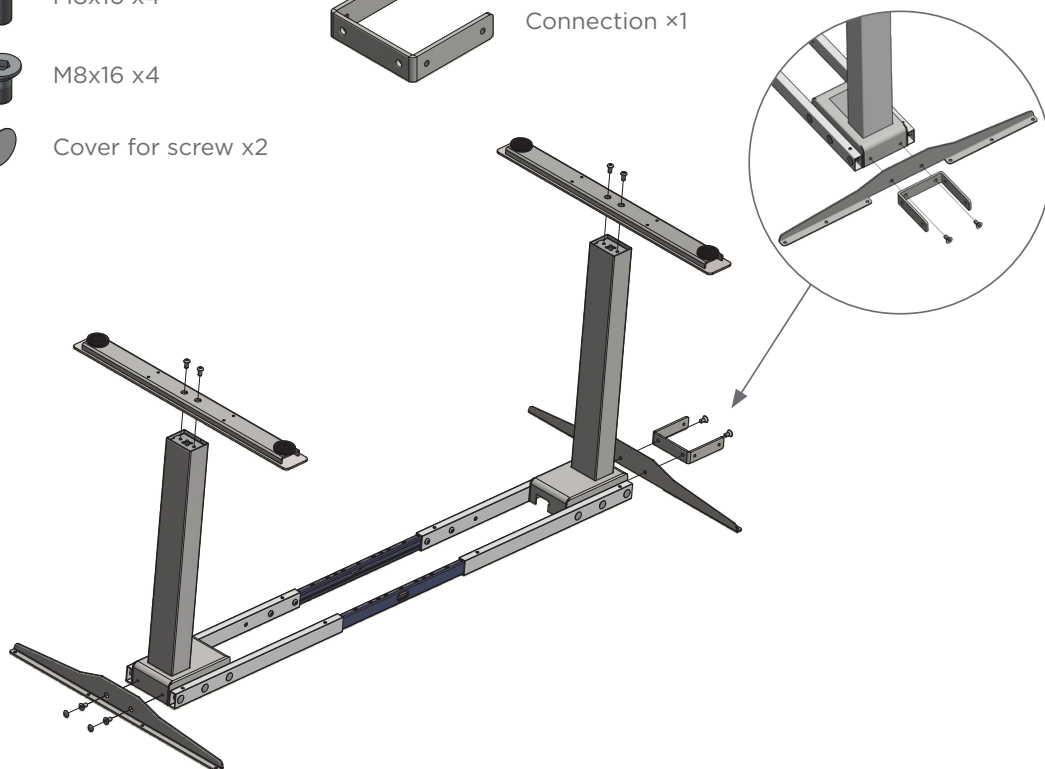
M8x16 x4

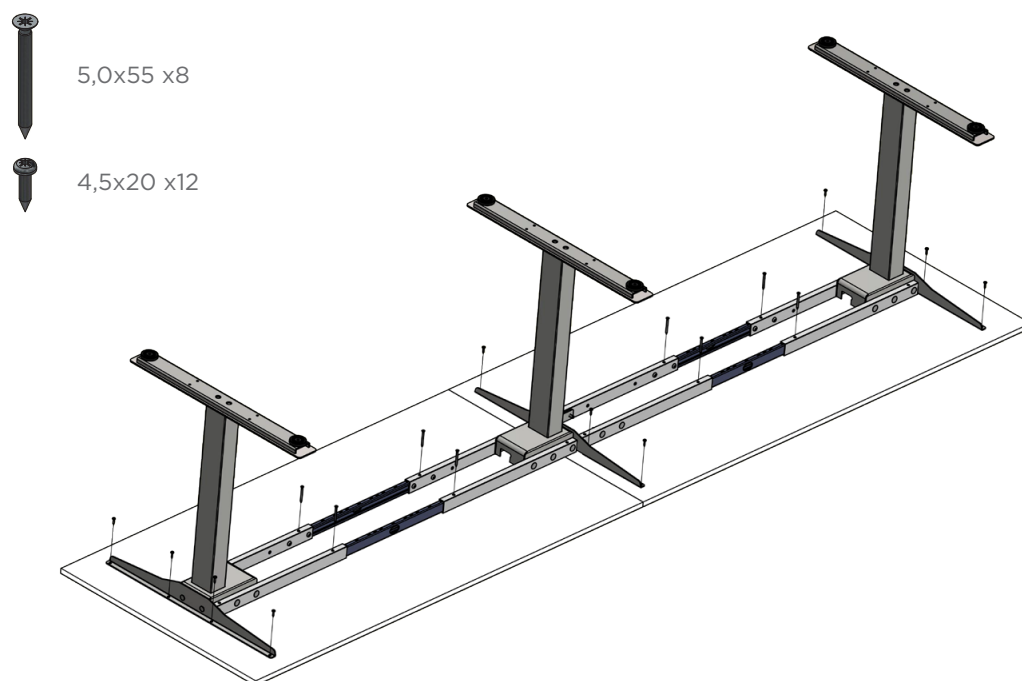


Cover for screw x2



Connection x1

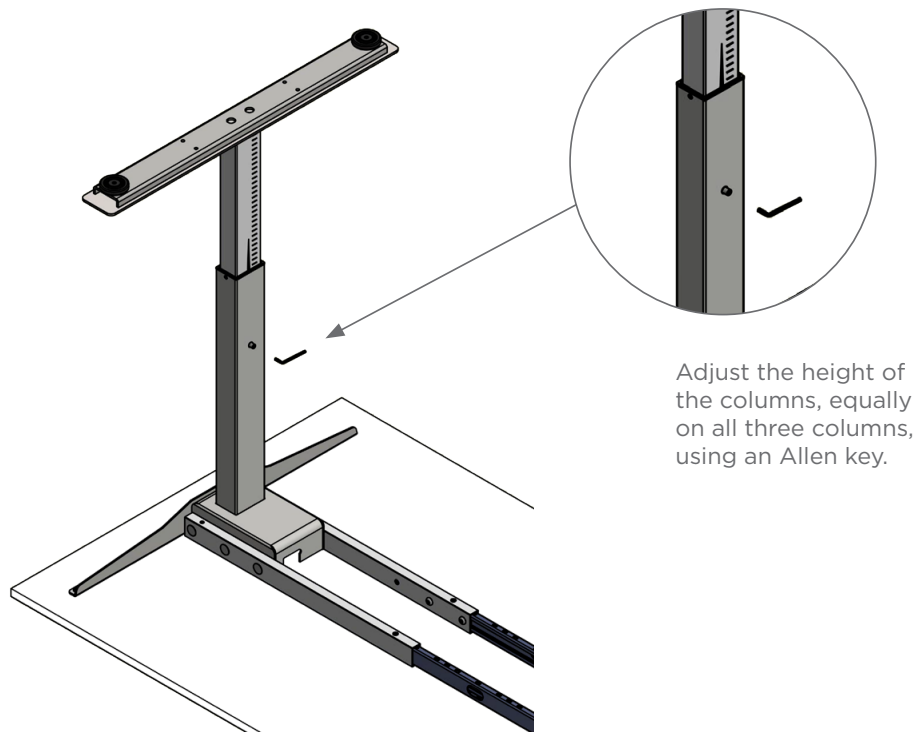




Loosen screws in crossbars and adjust stand width symmetric to desired position.

Observe: Screws are for desktops 20 mm or thicker.

4.1 Height adjustment for incremental



Adjust the height of the columns, equally on all three columns, using an Allen key.

Observe: Make sure every screw is tightened before use.

Ready to use!

4. MAINTENANCE & REPAIRS

4.1 Cleaning, Inspection & Storage

Clean the desk stand by wiping it down with a dry microfiber cloth. Never use solvent, abrasive or corrosive compounds.

Products must be cleaned at regular intervals to remove dust and dirt and inspected for mechanical damage and normal wear and tear. Worn-out parts must be replaced.

4.2 User Maintenance

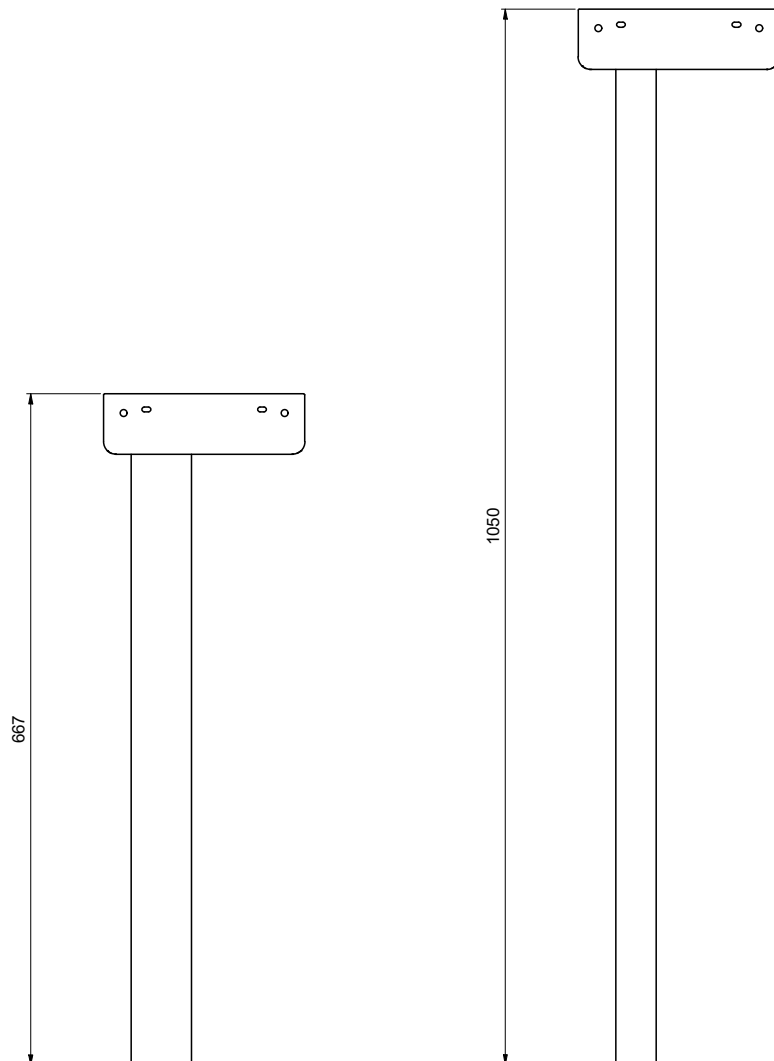
Products are closed units and require no internal maintenance.

4.3 Repairs

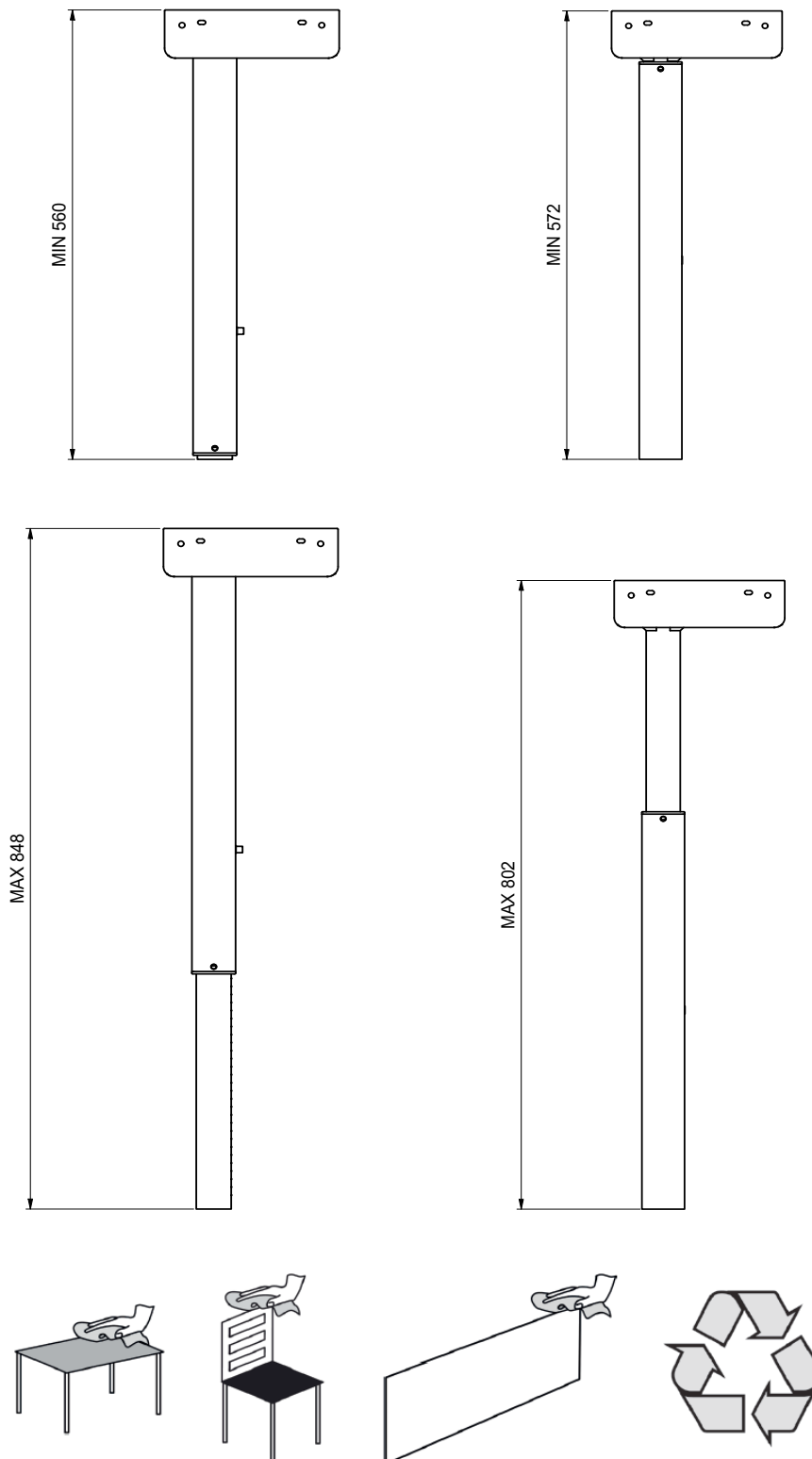
Check all screws and bolts after the first week of use and tighten screws and bolts where necessary to ensure safe operation of the desk.

5. APPENDIX

5.1 Dimensions leg system: FX (Fixed)



5.2 Dimensions leg system: IC (Incremental)



The product contains one or more of following materials:
Wood, metal, plastic.